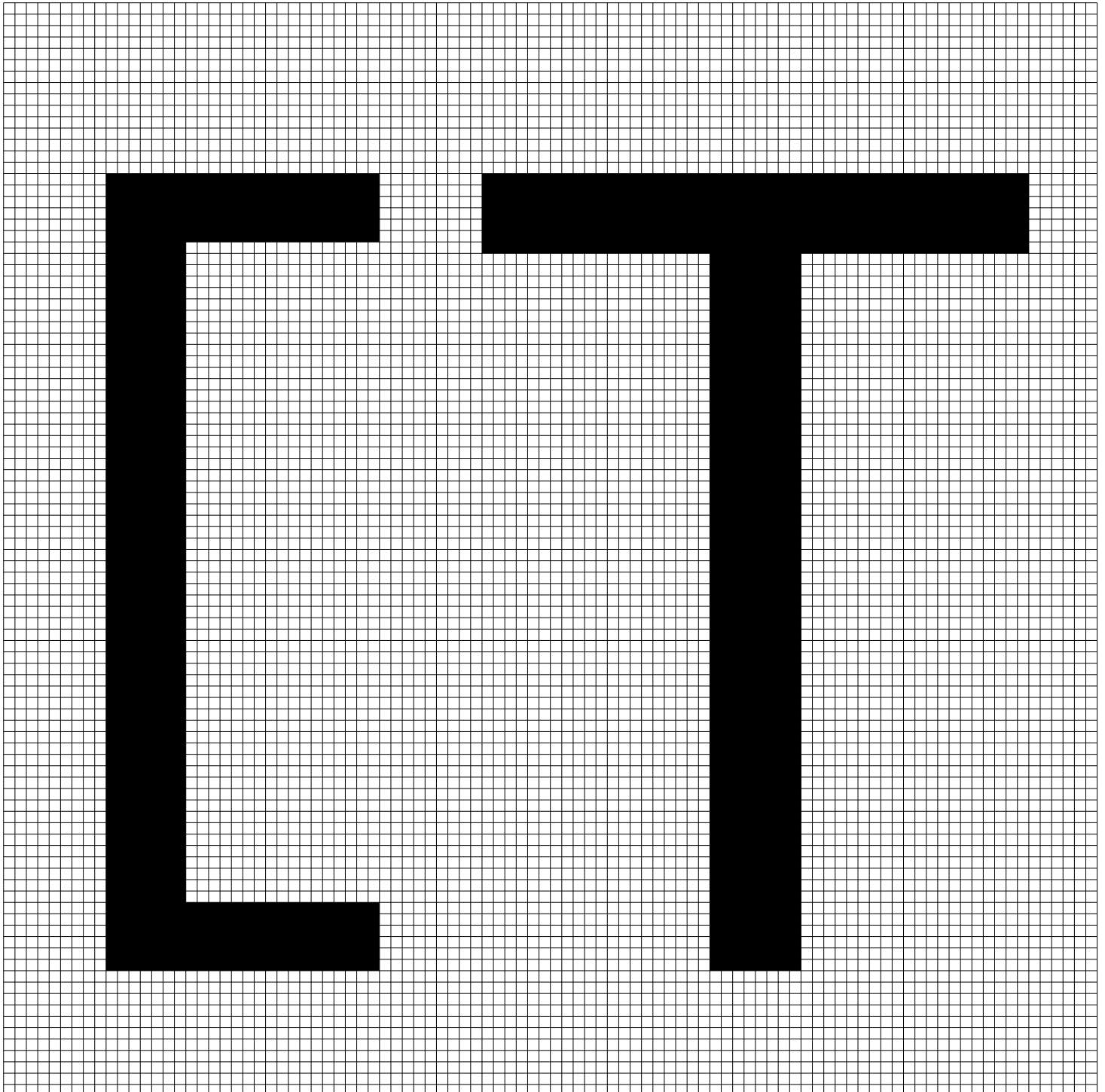


vołksans mono



All encoded characters should be accessible with every unicode capable application. For details about Unicode Blocks visit the Unicode Website → unicode.org/charts

Glyph Map

All 1044 glyphs of volksans in physical order

Basic Latin

Block from 0000 to 007F / 100%

A	B	C	D	E	F	G	H	I	I	J	J	K	L	M	N
0041	0042	0043	0044	0045	0046	0047	0048	0049	SS03	004A	SS03	004B	004C	004D	004E
O	P	Q	Q	Q	R	S	T	U	V	W	X	Y	Z	a	a
004F	0050	0051 →	SS03	SS04	0052	0053	0054	0055	0056	0057	0058	0059	005A	0061	SS01
b	c	d	e	f	f	g	g	h	i	j	j	k	l	l	m
0062	0063	0064	0065	0066 →	SS04	0067 →	SS04	0068	0069	006A →	SS04	006B	006C →	SS03	006D
n	o	p	q	r	s	t	u	v	w	x	y	y	z	0	0
006E	006F	0070	0071	0072	0073	0074	0075	0076	0077	0078	0079 →	SS02	007A	0030	TF →
0	1	1	2	2	3	3	4	4	5	5	6	6	7	7	8
ZERO	0031 →	TF	0032 →	TF	0033	TF	0034 →	TF	0035 →	TF	0036 →	TF	0037 →	TF	0038 →
8	9	9	!	"	#	#	\$	\$	\$	%	&	'	(((
TF	0039 →	TF	0021	0022	0023 →	TF	0024 →	TF	SS07	0025	0026	0027	0028 →	CASE	SS11
)))	*	*	+	+	+	+	,	-	-	.	/	/	:
0029 →	CASE	SS11	002A →	CASE	002B →	CASE	TF	SS10	002C	002D →	CASE	002E	002F →	SS08	003A
:	;	;	<	<	<	=	=	=	>	>	>	?	@	@	[
CASE	003B →	CASE	003C →	CASE	TF	003D →	CASE	TF	003E →	CASE	TF	003F	0040	CASE	005B →
[[\	\]]]	^	_	_	`	{	{	{		
CASE	SS11	005C →	SS08	005D →	CASE	SS11	005E	005F →	CASE	0060	007B →	CASE	SS11	007C →	CASE
	}	}	}	~	~	~									
SS11	007D →	CASE	SS11	007E →	CASE	TF	0000	000D	0020						

Latin-1 Supplement

Block from 0080 to 00FF / 100%

À	Á	Â	Ã	Ä	Å	Æ	Ç	È	É	Ê	Ë	Ì	Ì	Í	Í
00C0	00C1	00C2	00C3	00C4	00C5	00C6	00C7	00C8	00C9	00CA	00CB	00CC →	SS03	00CD →	SS03
Î	Î	Ï	Ï	Ð	Ñ	Ò	Ó	Ô	Õ	Ö	Ø	Ù	Ú	Û	Ü
00CE →	SS03	00CF →	SS03	00D0	00D1	00D2	00D3	00D4	00D5	00D6	00D8	00D9	00DA	00DB	00DC
Ý	Þ	ß	à	à	á	á	â	â	ã	ã	ä	ä	å	å	æ
00DD	00DE	00DF	00E0 →	SS01	00E1 →	SS01	00E2 →	SS01	00E3 →	SS01	00E4 →	SS01	00E5 →	SS01	00E6
ç	è	é	ê	ë	ì	í	î	ï	ð	ñ	ò	ó	ô	õ	ö
00E7	00E8	00E9	00EA	00EB	00EC	00ED	00EE	00EF	00F0	00F1	00F2	00F3	00F4	00F5	00F6
ø	ù	ú	û	ü	ý	ý	ÿ	ÿ	þ	í	í	ç	ç	ç	ç
00F8	00F9	00FA	00FB	00FC	00FD →	SS08	00FF →	CASE	00FE	00A1 →	CASE	00A2 →	CASE	SS07	TF
£	£	α	α	¥	¥	ı	§	§	¨	©	ª	«	«	¬	¬
00A3 →	TF	00A4 →	TF	00A5 →	TF	00A6	00A7 →	TF	00A8	00A9	00AA	00AB →	CASE	00AC	CASE →
¬	®	-	°	±	±	±	²	³	´	µ	¶	·	·	,	¹
TF	00AE	00AF	00B0	00B1	CASE	TF	00B2	00B3	00B4	00B5	00B6	00B7 →	CASE	00B8	00B9
º	»	»	¼	½	¾	¿	¿	×	×	×	÷	÷	÷		
00BA	00BB →	CASE	00BC	00BD	00BE	00BF →	CASE	00D7 →	CASE	TF	00F7 →	CASE	TF		

Alphabetic Presentation Forms

Block from FB00 to FB4F / 8.6%

fi	fi	fl	fl	ff	ff	ffi	ffi	ffl	ffl	ffl
FB01 →	SS04	FB02 →	SS03	FB00 →	SS04	FB03 →	SS04	FB04 →	SS03	SS04

Latin Extended-B

Block from 0180 to 024F / 20.2%

ə	f	ɪ	ɪ	ɲ	θ	z	Ǻ	ĭ	ĭ	Ǿ	ŭ	ǧ	ķ	o	̀
018F	0192	0197 →	SS03	019D	019F	01B5	01CD	01CF →	SS03	01D1	01D3	01E6	01E8	01EA	01F8
Á	É	Ó	Ş	Ț	Ĥ	Ó	Ȳ	Ƨ	z	ǻ	ǻ	ı	ǿ	ŭ	ǧ
01FA	01FC	01FE	0218	021A	021E	022E	0232	0244	01B6	01CE →	SS03	01D0	01D2	01D4	01E7 →
ǧ	ķ	o	̀	á	á	é	ó	ş	ţ	ĥ	ó	ȳ	ȳ	Ј	Ј
SS04	01E9	01EB	01F9	01FB →	SS01	01FD	01FF	0219	021B	021F	022F	0233 →	SS02	0237 →	SS04
!															
01C3															

IPA Extensions

Block from 0250 to 02AF / 6.3%

ə	ɨ	ɳ	θ	Ƨ	ɭ
0259	0268	0272	0275	0289	0269

Greek and Coptic

Block from 0370 to 03FF / 5.2%

Δ	Ω	μ	π	π	β	θ	.	.
0394	03A9	03BC	03C0 →	SS03	03B2	03B8	03B7 →	CASE

Spacing Modifier Letterssions

Block from 02B0 to 02FF / 12.5%

^	˘	˘	.	◦	,	~	”	,	-
02C6	02C7	02D8	02D9	02DA	02DB	02DC	02DD	02BC	02C9

Combining Diacritical Marks

Block from 0300 to 036F / 20.5%

◌`	◌´	◌^	◌~	◌-	◌ˇ	◌·	◌¨	◌◦	◌“	◌ˇ	◌^	◌´	◌·	◌¨	◌◦
0300	0301	0302	0303	0304	0306	0307	0308	030A	030B	030C	0311	0312	0323	0324	0325
◌´	◌´	◌´	◌ˇ	◌~	◌-										
0326	0327	0328	032C	0330	0331										

Latin Extended Additional

Block from 1E00 to 1EFF / 33.6%

À	Á	Â	Ã	Ä	Å	Æ	Ě	ƒ	Ĝ	Ĥ	Ħ	Ĩ	İ	ı	Ĺ
1E00	1E02	1E0A	1E0C	1E0E	1E10	1E18	1E1C	1E1E	1E20	1E22	1E24	1E2A	1E2A →	SS03	1E36
Ļ	Ł	Ń	Ņ	Ŧ	Ŋ	Ŋ	Ŋ	Ŋ	Ŋ	Ŋ	Ŋ	Ŋ	Ŋ	Ŋ	Ŋ
1E38	1E3A	1E3E	1E40	1E42	1E44	1E46	1E48	1E4C	1E56	1E5A	1E5C	1E5E	1E60	1E62	1E6A
Ŧ	Ŧ	Ŧ	Ŧ	Ŧ	Ŧ	Ŧ	Ŧ	Ŧ	Ŧ	Ŧ	Ŧ	Ŧ	Ŧ	Ŧ	Ŧ
1E6C	1E6E	1E74	1E7C	1E80	1E82	1E84	1E8A	1EF2	1EF8	1E92	1E9E	1EA1 →	SS01	1E03	1E0B
đ	đ	đ	đ	đ	đ	đ	đ	đ	đ	đ	đ	đ	đ	đ	đ
1E0D	1E0F	1E11	1E19	1E1D	1E1F →	SS04	1E21 →	SS	1E23	1E25	1E2B	1ECB	1E37 →	SS03	1E39 →
ł	ł	ł	ł	ł	ł	ł	ł	ł	ł	ł	ł	ł	ł	ł	ł
SS03	1E3B →	SS03	1E3F	1E41	1E43	1E45	1E47	1E49	1ECD	1E57	1E5B	1E5D	1E5F	1E61	1E63
ł	ł	ł	ł	ł	ł	ł	ł	ł	ł	ł	ł	ł	ł	ł	ł
1E6B	1E6D	1E6F	1E75	1E7D	1E81	1E83	1E85	1E8B	1EF3 →	SS	1EF9 →	SS	1E93	1E97	

General Punctuation

Block from 2000 to 206F / 35.1%

												—	—	—	—
2000	2001	2002	2003	2004	2005	2006	2007	2008	2009	200A	200B	2012 →	CASE	2013 →	CASE
—	—	—	'	'	'	'	'	'	"	"	"	"	"	"	†
2014 →	CASE	SS10	2018 →	SS12	2019 →	SS12	201A →	SS12	201C →	SS12	201D →	SS12	201E →	SS12	2020
‡	•	•	◆	●	...	‰	'	"	<	<	>	>	/		▶
2021	2022 →	CASE	SS13	SS14	2026	2030	2032	2033	2039 →	CASE	203A →	CASE	2044	2016	2023 →
▶	”	”	* * *	-	-	* * *									
CASE	2034 →	SS12	2042	2043 →	CASE	2051									

Superscripts and Subscripts

Block from 2070 to 209F / 45.2%

0	4	5	6	7	8	9	0	1	2	3	4	5	6	7	9
2070	2074	2075	2076	2077	2078	2079	2080	2081	2082	2083	2084	2085	2086	2087	2088
9	()													
2089	208D	208E													

Currency Symbols

Block from 20A0 to 20CF / 32.3%

₣	₣	£	£	₹	₹	₹	€	€	₹	₹	₹	₹	₹	₹	₹
20A3 →	TF	20A4 →	TF	20AA →	TF	20AB →	20AC →	TF	20B8 →	TF	20B9 →	TF	20BA →	TF	20BC →
₹	₣	₣	₹	₹											
TF	20BD →	TF	20BF →	TF											

Number Forms

Block from 2150 to 218F / 28.3%

$\frac{2}{3}$	$\frac{1}{3}$	$\frac{2}{3}$	$\frac{1}{5}$	$\frac{2}{5}$	$\frac{3}{5}$	$\frac{4}{5}$	$\frac{1}{6}$	$\frac{5}{6}$	$\frac{1}{7}$	$\frac{1}{8}$	$\frac{3}{8}$	$\frac{5}{8}$	$\frac{7}{8}$	$\frac{1}{9}$	$\frac{1}{10}$
2189	2153	2154	2155	2156	2157	2158	2159	215A	2150	215B	215C	215D	215E	2151	2152
$\frac{4}{7}$															
215F															

Mathematical Operators

Block from 2200 to 22FF / 6.3%

∂	Δ	\prod	\emptyset	Σ	\sum	$-$	$-$	$-$	$/$	\cdot	$\sqrt{\quad}$	∞	∞	\int	\approx
2202	2206	220F	2205	2211 → SS07	2212 → CASE	TNUM	2215	2219	221A	221E → CASE	222B	2248			
\approx	\neq	\neq	\leq	\leq	\geq	\geq	\equiv								
CASE	2260 → CASE	2264 → CASE	2265 → CASE	2261											

Geometric Shapes

Block from 25A0 to 25FF / 15.6%

25CF	25CB	25D0	25D1 → SS06	25D2	25D3	25D4	25D5	25C9	25E6 → CASE	SS14	25B2 → CASE	SS06			
25BC → CASE	SS06	25BA → CASE	SS06	25C4 → CASE	SS06	25CA → SS07									

Arrows

Block from 2190 to 21FF / 12.5%

2190 →	CASE	2191 →	CASE	2192 →	CASE	2193 →	CASE	2194 →	CASE	2195 →	CASE	2196 →	CASE	2197	CASE
2198 →	CASE	2199 →	CASE	21A9	21AA	21C4	21C6								

Supplemental Arrows-B

Block from 2900 to 297F / 3.9%

2913	2934 →	CASE	2935 →	CASE	2936 →	CASE	2937 →	CASE

Letterlike Symbols

Block from 2100 to 214F / 6.3%

2116	2117	2122	2126	212E →	CASE

Ornaments

ORN001	ORN002	ORN003	ORN004	ORN005	ORN006	ORN007	ORN008

Technical

● Open Type Layout Features:

aalt	Access All Alternates
ccmp	Glyph Composition/Decomposition
locl	Localized Forms
hist	Historical Forms
subs	Subscript
sinf	Scientific Inferiors
sup	Superscript
onum	Oldstyle Figures
ornm	Ornaments
calt	Contextual Alternates
numr	Numerators
dnom	Denominators
frac	Fractions
ordn	Ordinals
pnum	Proportional Figures
ornm	Ornaments
case	Case-Sensitive Forms
tnum	Tabular Figures
dlig	Discretionary Ligatures
liga	Standard Ligatures
zero	Slashed Zero
cpsp	Capital Spacing
salt	Stylistic Alternates
ss01	Stylistic Set 1
ss02	Stylistic Set 2
ss03	Stylistic Set 3
ss04	Stylistic Set 4
ss05	Stylistic Set 5
ss06	Stylistic Set 6
ss07	Stylistic Set 7
ss08	Stylistic Set 8
ss09	Stylistic Set 9
ss10	Stylistic Set 10
ss11	Stylistic Set 11
ss12	Stylistic Set 12
ss13	Stylistic Set 13
ss14	Stylistic Set 14

Characters Sets:

Adobe
Adobe Latin-1
Adobe Latin-2
Apple Macintosh
MacOS Roman (Standard Latin)
MacOS Central European Latin
MacOS Celtic
MacOS Croatian
MacOS Iceland
MacOS Romanian
MacOS Turkish
ISO 8859
8859-1 Latin-1 Western European
8859-2 Latin-2 Central European
8859-3 Latin-3 South European
8859-4 Latin-4 North European
8859-9 Latin-5 Turkish
8859-10 Latin-6 Nordic
8859-13 Latin-7 Baltic Rim
8859-14 Latin-8 Celtic
8859-15 Latin-9
8859-16 Latin-10 South-Eastern European
Microsoft Windows
MS Windows 1250 Central European Latin
MS Windows 1252 Western (Standard Latin)
MS Windows 1254 Turkish Latin
MS Windows 1257 Baltic Latin

Information about languages is mainly based on the Unicode Common Locale Data Repository. For details visit the Unicode CLDR Project → unicode.org/cldr

Languages

● Language Support

Afrikaans	Hungarian	Malagasy	Sicilian
Albanian	Icelandic	Malay	Slovak
Asturian	Ido	Maltese	Slovenian
Asu	Igbo	Manx	Soga
Azerbaijani	Inar Sami	Maori	Somali
Basque	Indonesian	Mapuche	South Ndebele
Bemba	Interlingua	Meru	Southern Sotho
Bena	Irish	Mohawk	Spanish
Bosnian	Italian	Morisyen	Swahili
Breton	Javanese	North Ndebele	Swati
Catalan	Jju	Northern Sami	Swedish
Cebuano	Jola-Fonyi	Northern Sotho	Swiss German
Chiga	Kabuverdianu	Norwegian Bokmål	Taita
Colognian	Kalaallisut	Norwegian Nynorsk	Taroko
Cornish	Kalenjin	Nyanja	Tasawaq
Corsican	Kamba	Nyankole	Teso
Croatian	Kikuyu	Occitan	Tsonga
Czech	Kinyarwanda	Oromo	Tswana
Danish	Koyra Chiini	Polish	Turkish
Dutch	Koyraboro Senni	Portuguese	Turkmen
Embu	Kurdish	Quechua	Tyap
English	Lakota	Romanian	Upper Sorbian
Esperanto	Langi	Romansh	Vunjo
Estonian	Latvian	Rombo	Walloon
Faroese	Lithuanian	Rundi	Walser
Filipino	Lojban	Rwa	Welsh
Finnish	Low German	Samburu	Western Frisian
French	Lower Sorbian	Sango	Wolof
Friulian	Luo	Sangu	Xhosa
Galician	Luxembourgish	Sardinian	Yoruba
Ganda	Luyia	Scottish Gaelic	Zarma
German	Machame	Sena	Zulu
Guarani	Makhuwa-Meetto	Shambala	
Gusii	Makonde	Shona	/ 134

For details about OpenType Layout Features see the
 OpenType Layout tag registry
 → learn.microsoft.com/typography/opentype/spec/featurelist

Layout Features

	● OFF	ON
Case Sensitive	c=[a,b]{x} A1÷B2+C3 (Time-Out) → «Name»	C=[A,B]{X} A1÷B2+C3 (TIME-OUT) → «NAME»
Ligatures	f _l at office ofter	f _l at office ofter
Contextual Alternates	fjord strasse <= (c)(r)(p) -> +- 5x5 12:49 -- ---	fjord STRASSE ≤ © ® ® → ± 5x5 12:49 - -
Arbitrary Fraction	3 5/12 x 2 3/4 6 2/5 x 5 4/5	3 ⁵ / ₁₂ x 2 ³ / ₄ 6 ² / ₅ x 5 ⁴ / ₅
Superscript	Smith ₁ , E=mc ₂	Smith ¹ , E=mc ²
Subscript	H ₂ O, B ₂ O ₃ , Pb ₀₂	H ₂ O, B ₂ O ₃ , Pb ₀₂
Ordinals	1 _a 1 _o	1 ^a 1 ^o
Sharp S	Strasse	Straße
Stylistic Set 01: one-srotesy a	Alternate Yamaha	Alternate Yamaha
Stylistic Set 02: straight tail y	Stylycttic Property	Stylycttic Property

	● OFF	ON
Stylistic Set 03: Text: Q,l,j,l	HIGH flop, Quick Alt, Juice	HIGH flop, Quick Alt, Juice
Stylistic Set 04: Display: Q,f,g,j	Ajustmeng of just Qr fjord	Ajustmeng of just Qr fjord
Stylistic Set 05: Numbers in circle	0 1 2 3 4 5 6 7 8 9	① ② ③ ④ ⑤ ⑥ ⑦ ⑧ ⑨
Stylistic Set 06: Icon for web	● Theme / More ▼	◐ Theme / More ▼
Stylistic Set 07: Currency	\$100/ ¢50/ ₱0,02/	\$100/ ¢50/ ₱0,02/
Stylistic Set 08: Slash 45	Take/Slash/45	Take/Slash/45
Stylistic Set 10: Long emdash	Em – dash	Em — dash
Stylistic Set 11: Brackets	({[BRA CKE] })	({[BRA CKE] })
Stylistic Set 12: Quotesing	“Quotesing”	“Quotesing”
Stylistic Set 13: Rhomboid Bullet	● Rhomboid	◆ Rhomboid
Stylistic Set 14: Big Bullet	● Bullet	● Bullet

Localized Form Features

Letters	A a B b C c D d E e F f G g H h I i J j K k L l
	M m N n O o P p Q q R r S s T t U u V v W w X x
	Y y Z z
—	À à Á á Â â Ã ã Ä ä Å å Æ æ Ç ç È è É é Ê ê Ë ë
	Ì ì Í í Î î Ï ï Ð ð Ñ ñ Ò ò Ó ó Ô ô Õ õ Ö ö Ø ø
	Ù ù Ú ú Û û Ü ü Ý ý Þ þ ß ß Ā ā Ă ă Ą ą Ć ć Ĉ ĉ
	Ċ ċ Č č Ď ě Đ đ Ē ē Ĕ ĕ Ė ė Ę ę Ğ ğ Ğ ğ Ğ ğ
	Ĝ ĝ Ĥ ĥ Ħ ħ Ĩ ĩ Ī ī Ĭ ĭ Į į Ĵ ĵ Ĵ ĵ Ĵ ĵ Ĵ ĵ
	Ł ł Ł ł Ł ł Ł ł Ł ł Ł ł Ł ł Ł ł Ł ł Ł ł Ł ł
	Ō ō Œ œ Ŕ ŕ Ŗ ŗ Ř ř Ś ś Ŝ ŝ Š š Ţ ţ Ť ť Ʀ ƣ
	Ũ ũ Ū ū Ŭ ŭ Ů ů Ű ű Ų ų Ŵ ŵ Ŷ ŷ Ź ź Ż ż Ž ž
	ƒ ƒ ƒ ƒ ƒ ƒ ƒ ƒ ƒ ƒ ƒ ƒ ƒ ƒ ƒ ƒ ƒ ƒ ƒ ƒ
	Ō ō Ñ ñ Á á Ą ą Ő ő Ő ő Ő ő Ő ő Ő ő Ő ő Ő ő Ő ő
	Ḃ ḃ Ḑ ḑ Ḓ ḓ Ḕ ḕ Ḗ ḗ Ḙ ḙ Ḛ ḛ Ḝ ḝ Ḟ ḟ Ḡ ḡ Ḣ ḣ
	Ḥ ḥ Ḧ ḧ Ḩ ḩ Ḫ ḫ Ḭ ḭ Ḯ ṅ Ṇ ṇ Ṃ ṃ Ṅ ṅ Ṇ ṇ
	Ṱ ṱ Ṳ ṳ Ṵ ṵ Ṷ ṷ Ṹ ṹ Ṻ ṻ Ṽ ṽ Ṽ ṽ Ṽ ṽ Ṽ ṽ
	Ẁ ẁ Ẃ ẃ Ẅ ẅ Ẇ ẇ Ẉ ẉ Ẋ ẋ Ẍ ẍ Ẏ ẏ Ẑ ẑ
	Ẓ ẓ Ẕ ẕ ẖ ẗ ẘ ẙ ẚ ẛ ẜ ẝ ẞ ẟ Ạ ạ Ả ả
	Ấ ấ Ầ ầ Ẩ ẩ Ẫ ẫ Ậ ậ Ắ ắ Ằ ằ Ẳ ẳ Ẵ ẵ Ặ ặ
	Ẹ ẹ Ẻ ẻ Ị ị Ọ ọ Ụ ụ Ỳ ỳ Ỹ ỹ

Locl. CAT
Catalan

Paral·lel station, cel·la

Locl. NLD
Dutch ij

míjn → mǐjn

Calc.
Capital Sharp S

Aßen → AßEN

Locl. PLK
Polish Kreska

ćńóśź → ćńóśż

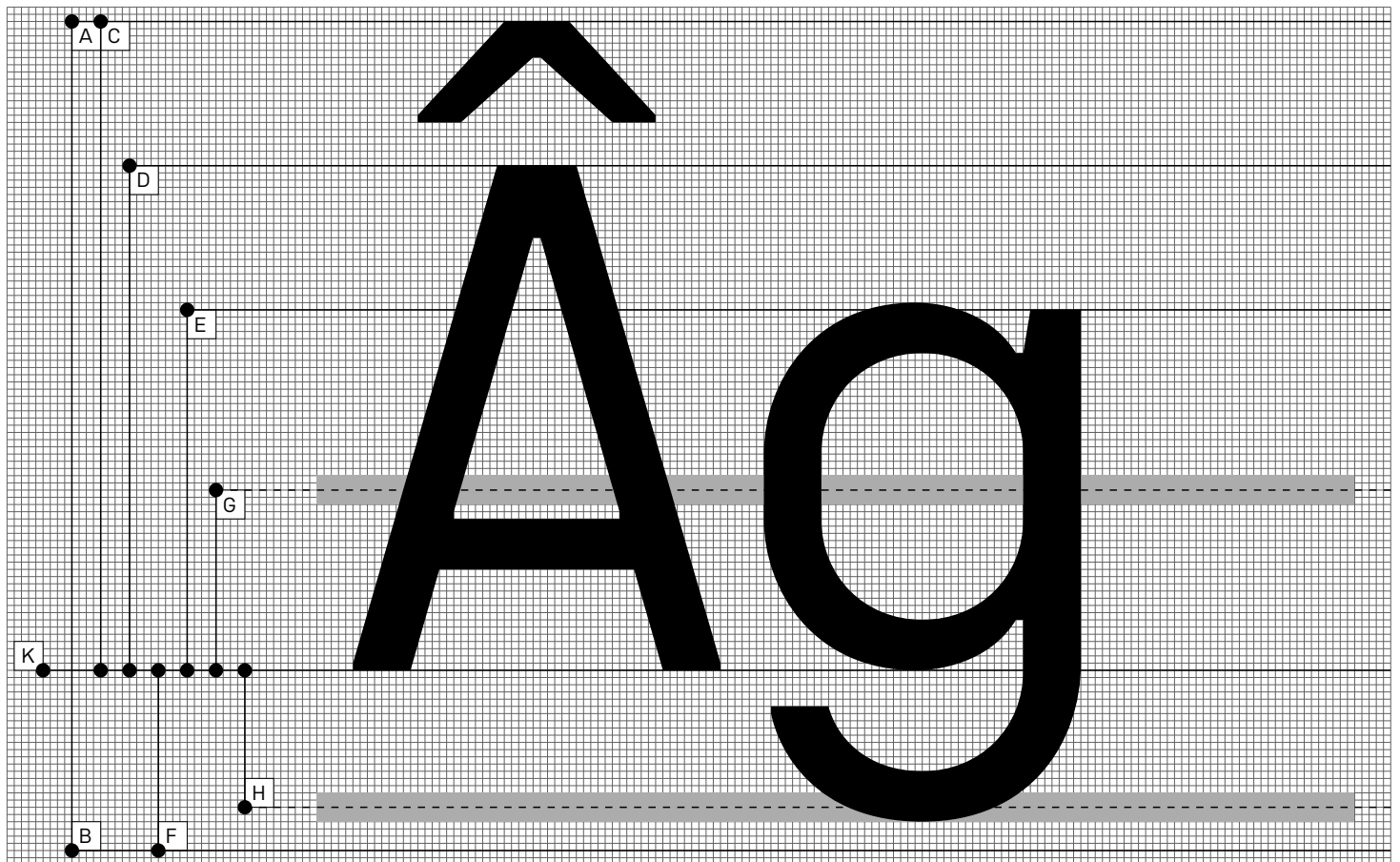
Locl. ROM/MOL
Comma Accent

Țț / Șș → Țț / Șș

Locl. TRK
Turkish i

DIYARBAKIR → DİYARBAKIR

Metrics



	Property	Value	Property	Value	
	Unit PerUm	1000	F	typoDescender	-250
A	hheaAscender	900	G	strikeOut Position	260
B	hheaDescender	-250		strikeOut Size	40
C	typoAscender	900	H	underline Position	-190
D	Cap-Height	700		underline Size	40
E	X-Height	500	K	typoLineGap	0

© Radmir Volk 2025
All rights reserved

No part of this publication may be reproduced, modified or transmitted in any form or by any means, electronic or mechanical, including photocopy, without the written permission from the author/editor.

For more information please feel free to write
hello@radmirvolk.design

Design & Engineering by Radmir Volk
Made in Bashqortostan
